



Manufacturing Management

The Advanced Manufacturing System (AMS) is a powerful software suite designed to simplify the process of planning and managing production processes. Integrating accounting, production, ordering, and inventory management, the system can control all aspects of the production and involved accounting process. Because of its Microsoft ® Office integration, the system provides all of this functionality via an intuitive, user friendly interface.

The AMS is the result of many years experience with a wide range of manufacturing businesses. It is built on up to date technology and is being continually enhanced to keep in step with a rapidly changing business environment. Because ABM's manufacturing system is easy to learn, cost effective and flexible, it quickly becomes an essential part of business's growth strategy.

With its extensive functionality, the manufacturing system:

- Provides greater process management
- Generates powerful and comprehensive reports
- Improves planning efficiency
- Enables fast, efficient changes to production
- Enables flexibility for bulk transactions
- Assists with material planning requirements
- Manages and utilises inventory stocks and bills of material efficiently
- Links demand and production together
- Reduces time wastage
- Integrates with the accounting system
- Produces integrative quotes
- Allows for multiple stages of production, outwork and work in progress

System-Wide Features

Accounting system integration

Seamless integration with the ABM accounting system combines accounting, production, ordering and inventory management. No double-entry of information as the AMS automatically posts transactions into the ABM accounting system.

Reporting

Extensive reporting functionality is provided as a powerful analytical tool for planning, managing and much more.

Grouping

Groups are used to categorise manufacturing elements to create a logical and simple organisation structure. Groups allow predetermined properties and rules to be placed on certain components of manufacturing which allow for easy financial system updating, assists in reporting and manages manufacturing data.

System tables

Used to identify and separate different areas of management, for easy operation and separation of activities.

Simple and familiar interfaces

Menus and navigation are designed to be simple and fast. By using familiar Microsoft ® Office style menus, fast menu toolbars, and handy "hot keys", a user-friendly environment is created for all.





BUSINESS SOLUTIONS

Module Features

Bill of materials (BOM)

The bill of materials/manufacturing functionality makes the task of maintaining detailed bills of components, sub-components and expenses for a product easy. Bills can be manually created within the AMS or imported from external data files. BOMs can be created, maintained and deleted, and multiple versions of each BOM are possible with user definable names for each version. Maximum and minimum production limits can be set, and different costing methods are available for different BOMs.

Other BOM features include:

- Unlimited alternative production possibilities
- Detailed information per component
- Unlimited components and sub-assemblies per BOM
- Recorded component wastage
- Easy-to-use hierarchical tree interface
- "After-the-fact" recording of production
- Facilities for cost comparison and shortage reporting
- Multi-location inventory & serial/batch tracking

Extended production

Extends the production facilities in the standard BOM module to allow for multiple stages of production, outwork, and work in progress. Detailed costs can be entered against a production as required and all production costs are posted against work in progress accounts until they are either returned to stock or finished product is issued to stock.

Demand analysis

Open sales orders, production runs, stock shortages, minimum stock levels can all produce demand. A work order/production is created in the AMS to manage the production of finished products from components based on anticipated demand for the product. The module analyses product requirements in the accounting and AMS by examining sales quotations, orders, deliveries, invoices, job quotations and other production runs to produce recommendations for required work orders.

Supply analysis

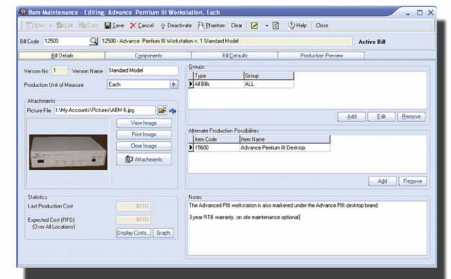
The AMS helps manage the material requirement planning process. It simplifies and speeds up the work processes of purchasing by analysing component demand and taking into account lead times for an inventory item. Analyse one or more production runs for shortages and requirements, and recommend purchasing, building or reserving the components. The AMS interacts with purchasing process of ABM's accounting system to the extent that deliveries may be automatically issued to the appropriate production run.

Job entry and bulk issues

The job entry functionality provides a very flexible interface for users who need to enter transactions against multiple production runs. The bulk issues functionality automates the issuing of components to production runs on a bulk basis.

Production quotation

Users can customise BOM information in response to particular client requirements and then provide a quotation to a client based on the anticipated costs of the customised bill of manufacturing. Once the quotation has been accepted by the client, it can be converted to planned production runs and a sales order can be raised in the accounting system, demonstrating the AMS's convenience and efficiency through powerful integration.



Please enquire with your solution provider for a comprehensive brochure for further detail on ABM's manufacturing system.