



BUSINESS SOLUTIONS

Payroll

Welcome to e-Pay, the Windows Payroll package. e-Pay is the result of many years research and development into payroll software and consultation with everyday users of payroll systems. e-Pay Payroll is a very powerful and versatile tool which allows you to control all of the various aspects of payroll through an intuitive and easy to use Windows interface.

e-Pay Payroll is unique in that it can trap costs by employee, job, cost centre and stage, and integrate these costs directly into the ABM accounting system. Within any one week employees can move between jobs and allocate correct costs to overhead accounts.

e-Pay was designed to suit a wide range of industries, and with the help of additional features provides added essential functionality to businesses who utilise job costing, including Construction, Manufacturing, Engineering, Professional Consulting and Services.

Features

Employee Details

The Employee Details option allows you to enter information on each employee. The employee's personal, tax and pay details can all be stored and viewed along with memo information. Year to date summary information and history information are all available to keep track of them during the year.

Timesheet

The Timesheet option is used to assign unlimited amount and types of payments and deductions to each employee. Most pay runs may only need a quick amendment of the Timesheet from the previous pay run providing fast handling. Payments can be made before tax (e.g. Salary) or after tax (e.g. Mileage Expenses) and can be processed by fixed, hourly or ratable methods. Deductions can be made before or after tax either in a fixed form or by percentage.

Payroll Processing

This is used to carry out the necessary calculations on the gross pay for Pensions, PRSI, Tax and other payments and deductions in order to produce the net amount. This information can be viewed on screen and/or printed before an update is made. Payroll processing is very flexible and can be handled weekly, bi-weekly as well as monthly and quarterly, with all the necessary tax, PPS and other details automatically worked out.

Payslips

As the payroll is processed details are normally printed out on a payslip to be given to the employee or manually filed. Payment details can be printed onto pre-printed payslips or plain paper.





BUSINESS SOLUTIONS

Payments

The Payments option is used to take the net pay figure generated for the period and translate this into a payment. Payments can be made by Cash, Cheque or Electronic Funds Transfer.

Reports

Reports may be generated for recording purposes. e-Pay provides an extensive number of reports which can be used for analysing the payroll. A selection of summary and detail reports are available, analysing Gross to Net Pay, Payment and Deductions, Employers Costs, Job Costing, Time Analysis and Attendance Analysis.

Job Costing

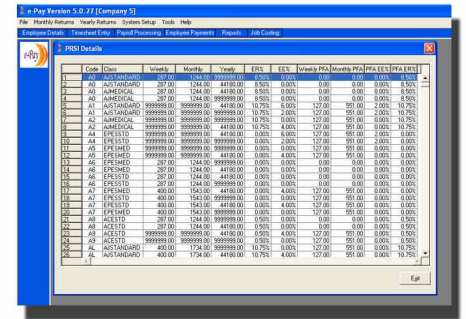
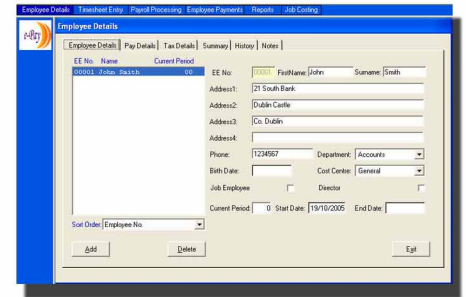
Job Costing is used to setup individual activities which may be made up of multiple stages. Employees can be set up as "Job Employees"; their time can then be allocated to the different Stages in a Job according to a Cost Centre. This allows for profitability analysis on particular jobs and extensive resource monitoring.

System Setup

Use the System Setup button to record the default settings for e-Pay's operation. Using this option you can set up Users, Departments, Cost Centres, Payments and Deductions. e-Pay places no limitations on the number of these entities. The employer information can also be entered here.

Taxation Setup

The Taxation Setup option allows the user to set the tax, emergency tax and PRSI. With regards to tax the user can input the standard rate cut off points and tax credits.



Other Features

- Payslips on-screen before update
- Time Clock interface
- Direct Transfers of costs to accounting software
- All statutory reports
- Import tax free allowance
- PRSA compatible
- Holiday and absence tracking
- Links directly to Microsoft Excel for non-standard reports
- Exceptions reporting
- P35 on disk
- National Payments - Benefits in Kind